



# Affiliated Tribes of Northwest Indians Economic Development Corporation & Financial Services

---

ATNI-EDC

[info@atniedc.com](mailto:info@atniedc.com)

# ATNI-EDC Team Members



**Casey  
Pearlman**

Executive Director

[casey@atniedc.com](mailto:casey@atniedc.com)



**Guy Belfiore**

Loan Officer

[guy@atniedc.com](mailto:guy@atniedc.com)



**Mark  
Bowman**

Financial Services Director

[mark@atniedc.com](mailto:mark@atniedc.com)

# OUR OFFERINGS



Native Business Financing

Business Technical Assistance referral network

Northwest Native Lending Network

ATNI Economic Development Committee & economic development-related advocacy

State Small Business Credit Initiative Tribal Consortium

Northwest Native Economic Summit & Fashion Show



# TYPES OF LOAN CAPITAL



**Start up or Acquisition**

**Working Capital**

**Equipment**

**Commercial Real Estate**

**Tribal Project Financing\***

*\*Pilot program ongoing with SSBCI Tribal consortium*



# ATNI-EDC

## LENDING PROGRAM UPDATE

### Growing our fund & team

ATNI-EDC is growing our revolving loan fund and building more capacity to service our lending program to Tribal small businesses. We are hiring for a portfolio coordinator.

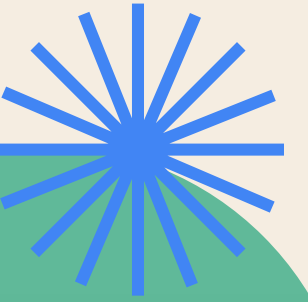
### Building while we fly

We have increased our average lending activity by **4000%** in the last year deploying over \$2M and we are not stopping there. We're piloting a Tribal enterprise lending program.

### Building up the ecosystem

We work with other Native lenders across the region to share best practices and find financial products that fit the needs of Tribal business owners.

# NORTHWEST NATIVE LENDING NETWORK



# ATNI ECONOMIC DEVELOPMENT COMMITTEE



***Join us tomorrow, Wednesday 5/22***

8:45 am - 9:15am: Session opens & introductions

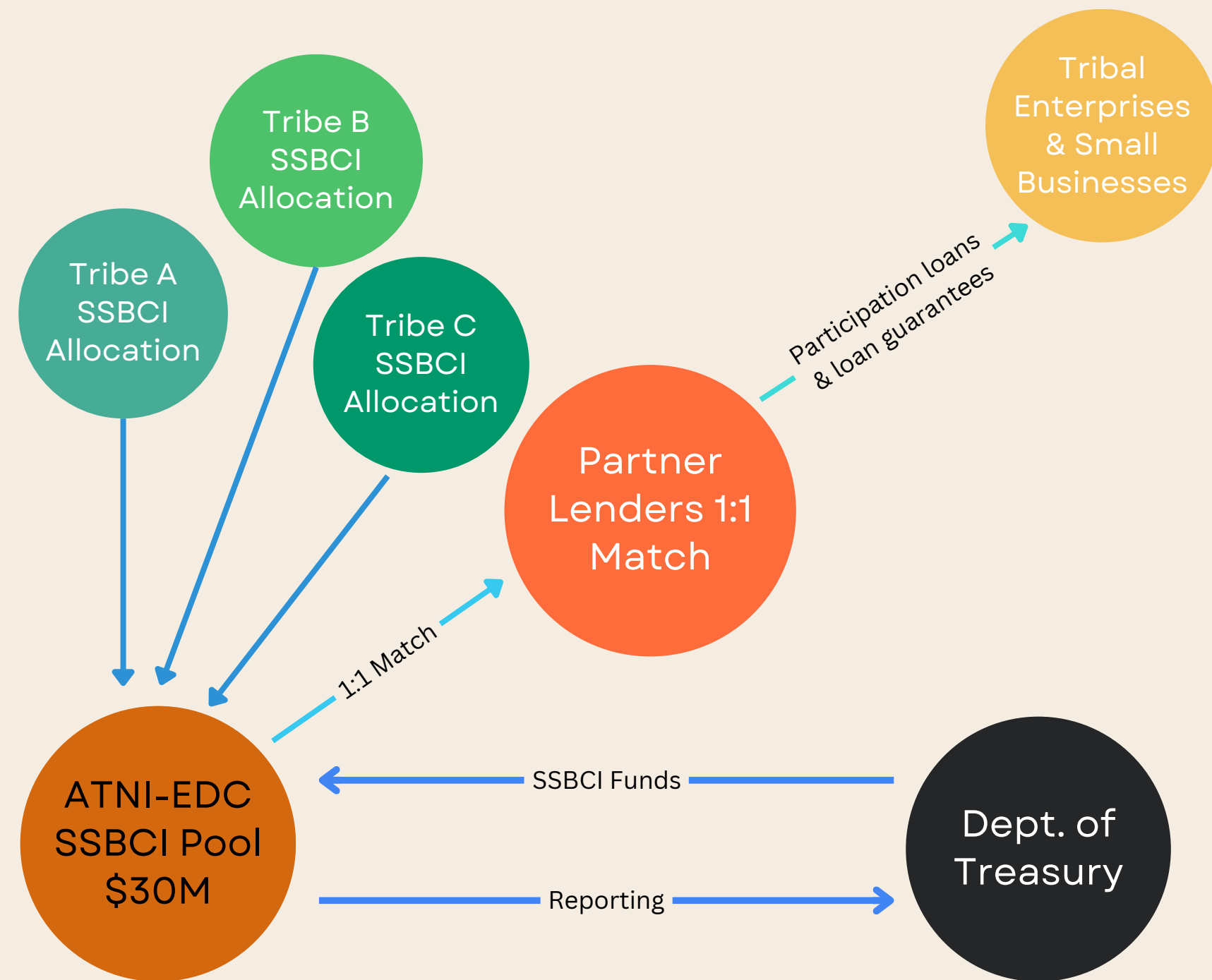
9:15am - 9:35am: ATNI-EDC presentation

9:35 - 10am: Nixyaawii Community Financial Services & Cayuse  
Native Solutions presentation

10am - 10:30am: WA Department of Commerce

10:30 - 10:45am: Session closing/resolutions

# SSBCI PROGRAM



- If your Tribe submitted an NOI for the original capital program, options may still be available to join our program.
  - We are working to coordinate with the states' programs to ensure Tribes have access.
  - We are first-movers are emerging knowledge sharing tools that will help this coordination as well as build capacity for other Tribal SSBCI programs.
-



# 2024 NW NATIVE ECONOMIC SUMMIT & NW NATIVE FASHION SHOW

# Save the date

# OCTOBER 16-18, 2024



# Portland, OR



**NCFS**  
NIXYÁAWII COMMUNITY  
FINANCIAL SERVICES

co-hosted by ATNI-EDC & Nixyaawii Community Financial Services



# Thank You

*We are honored to serve you!*

---

[atniedc.com](http://atniedc.com) (website remodel coming soon!)